

TH

7.10 P

7.10

- Available with two different engines
- of **55 kW and 75 kW** to adapt to your needs
- Hydraulic system **L/S, 350 bar**
- **4WD**

MAIN SECTORS



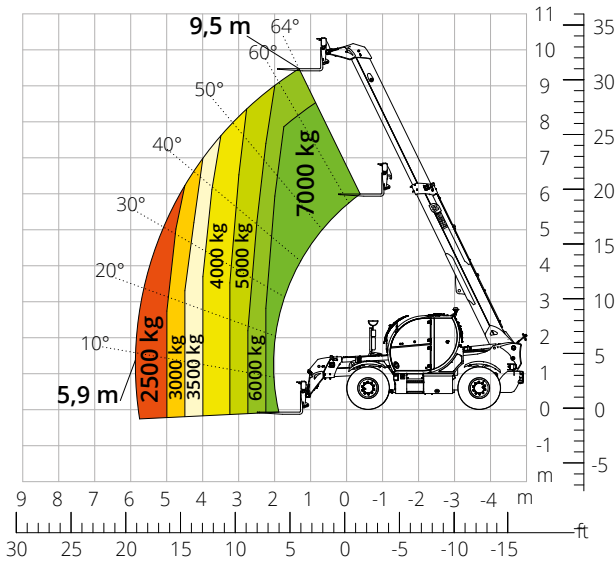
MANUFACTURING



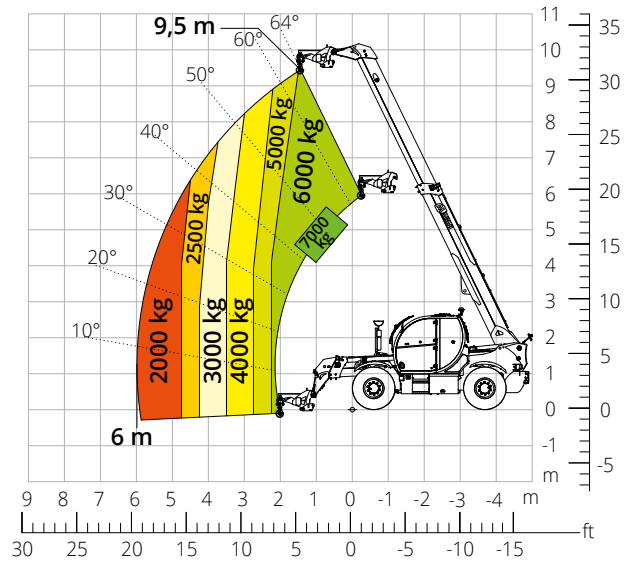
CONSTRUCTION



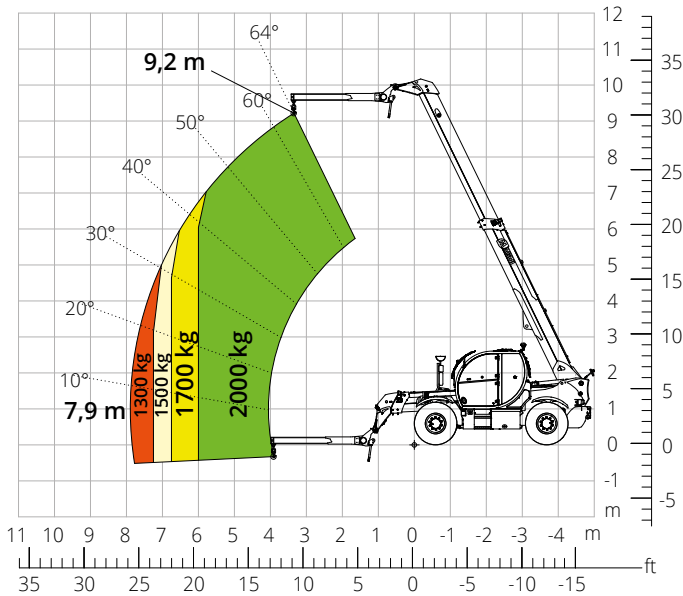
Load chart for
FRONT ATTACHMENT ON TYRES



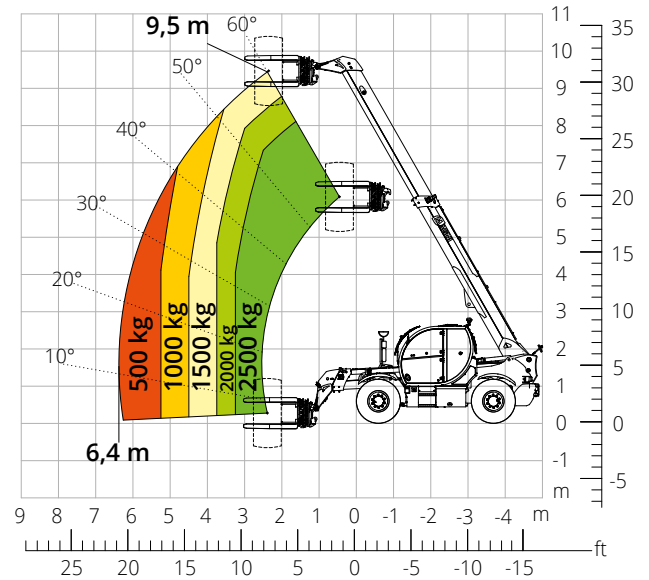
Load chart for
HOOK 7,000 kg



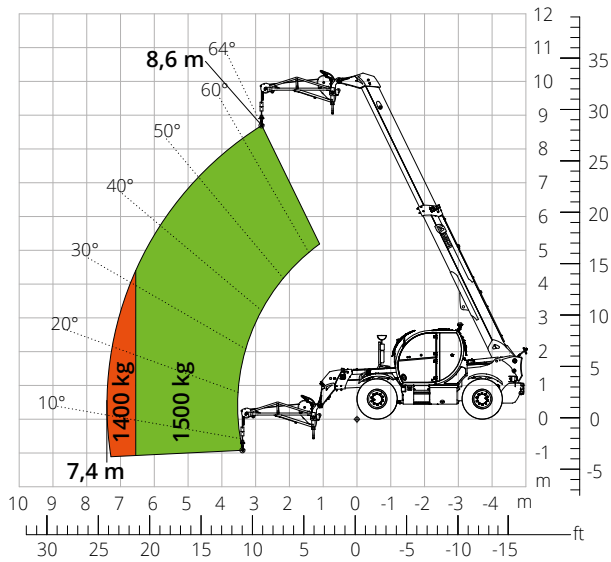
Load chart for
JIB 2,000 kg



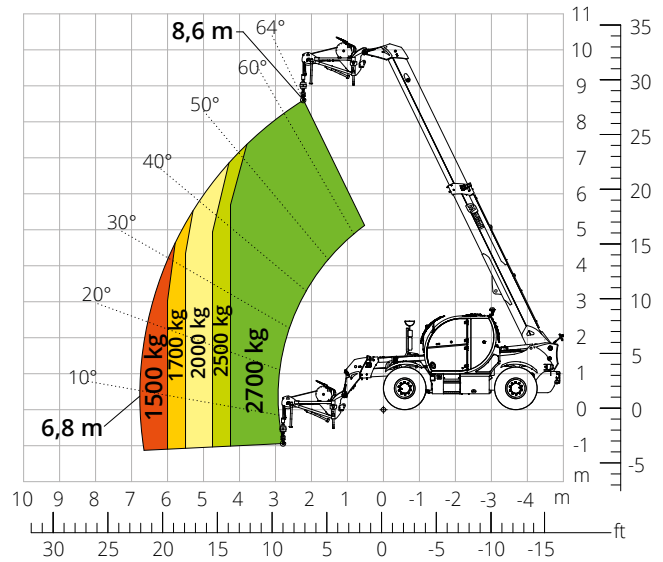
Load chart for
TYRE CLAMP 2,500 kg



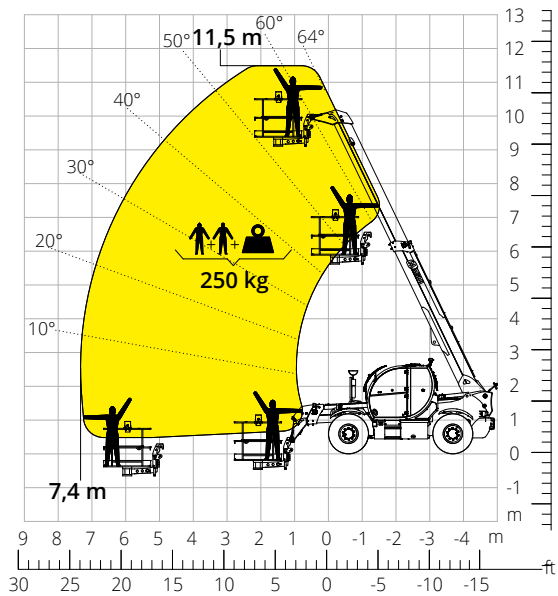
Load chart for
JIB WITH WINCH 1,500 kg



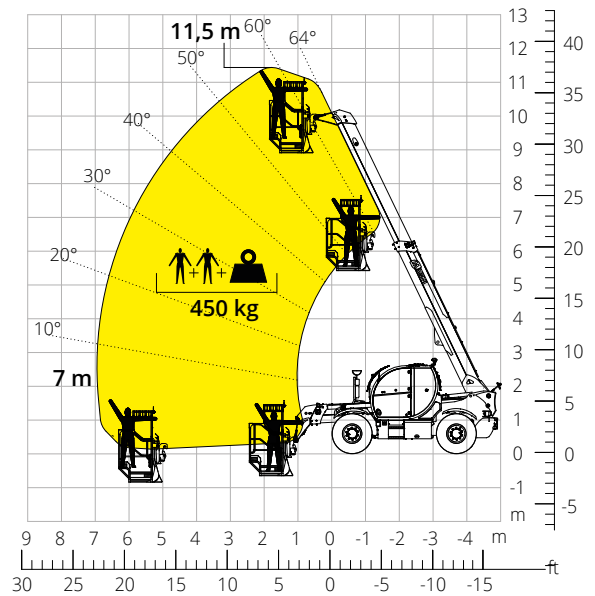
Load chart for
JIB WITH WINCH 2,700 kg



Load Chart for
NON-EXTENDABLE ROTATING PLATFORM 250 kg



Load Chart for
NON-EXTENDABLE PLATFORM 250 kg



TH 7.10 P / TH 7.10

Machine model	TH 7.10 P		TH 7.10		
	Telescopic handler				
Maximum lifting capacity	7,000 kg (centre of gravity 600 mm)		7,000 kg (centre of gravity 600 mm)		
Maximum reach	5.90 m		5.90 m		
Maximum lifting height	9.50 m		9.50 m		
Engine	Model	Deutz TCD 3.6 L4 Stage V	Deutz TCD 3.6 L4 EDG Stage IIIA	Deutz TCD 3.6 L4 Stage V	Deutz TCD 3.6 L4 EDG Stage IIIA
	Rated power	74.4 kW (101.2 hp) at 2,200 rpm		55.4 kW (75.3 hp) at 2,200 rpm	
	Maximum torque	410 Nm at 1,600 rpm		405 Nm at 1,300 rpm	390 Nm at 1,300 rpm
	Displacement	3.6 l		3.6 l	
	Cylinders	4 in line		4 in line	
	Engine type	Turbocharged direct injection diesel		Turbocharged direct injection diesel	
Cooling system	Water – intercooler		Water – intercooler		
Transmission	Type	Hydrostatic		Hydrostatic	
	Model	Bosch Rexroth		Bosch Rexroth	
	Maximum pressure	500 bar		500 bar	
	Displacements	Electronically controlled variable displacement pump Variable displacement motor		Electronically controlled variable displacement pump Variable displacement motor	
Axles and brakes	Gearbox	Dropbox, 2 speeds forward-reverse		Dropbox, 2 speeds forward-reverse	
	Type	Axles with planetary gearboxes		Axles with planetary gearboxes	
	Rear axle	Oscillating and steering with hydraulic lock		Oscillating and steering with hydraulic lock	
	Front axle	Oscillating and steering with levelling, +/-8°		Oscillating and steering with levelling, +/-8°	
	Service brake	Hydraulically operated wet multi-disk brakes on each axle		Hydraulically operated wet multi-disk brakes on each axle	
	Parking brake	Multi-disk spring applied hydraulically released (SAHR) brake		Multi-disk spring applied hydraulically released (SAHR) brake	
	Tyre sizes	445/65 R22.5		445/65 R22.5	
	Max. travel speed	35 km/h		25 km/h	
Performance	Drawbar pull	72 kN		72 kN	
	Gradeability	59%		59%	
	Turning radius (at forks)	5,290 mm		5,290 mm	
Weights	Total unladen*	11,900 kg (preliminary)		11,900 kg (preliminary)	
	Front axle unladen (boom retracted and lowered)*	3,900 kg (preliminary)		3,900 kg (preliminary)	
	Rear axle unladen (boom retracted and lowered)*	8,000 kg (preliminary)		8,000 kg (preliminary)	
	Diesel fuel tank	145 l		145 l	
Tank and system capacities	AdBlue	10 l		10 l	
	Hydraulic fluid	90 l		90 l	
	Engine oil	9 l		9 l	
	Coolant	20 l		20 l	
Hydraulic circuit for movements	Max. working pressure	350 bar		350 bar	
	Circuit type	Load sensing		Load sensing	
	Service pump	Variable displacement pump		Variable displacement pump	
	Distributor for boom movements	Danfoss – SIL 2 electro-proportional valve		Danfoss – SIL 2 electro-proportional valve	
	Movements control	1 Danfoss joystick with FNR with deadman safety device - Managed via CAN bus		1 Danfoss joystick with FNR with deadman safety device - Managed via CAN bus	
	Standards met	2006/42/EC: EU Machinery Directive 2016/1628: EU Regulation on the emissions of stage V engines EN 1459-X: Relating to standards on the safety requirements for variable reach machines EN 280/EN 280-1/EN 280-2: standards relating to mobile elevating work platforms (if available) ROPS/level 2 FOPS: relating to the standards for protective structures			

