

RTH

8.46

- **Totally renewed** machine control **software**
- Completely upgraded **dynamic load chart** display
- **Unrivalled** lifting **performance**
- **Hydraulic** and **electric** completely revised to facilitate After Sales service

MAIN SECTORS



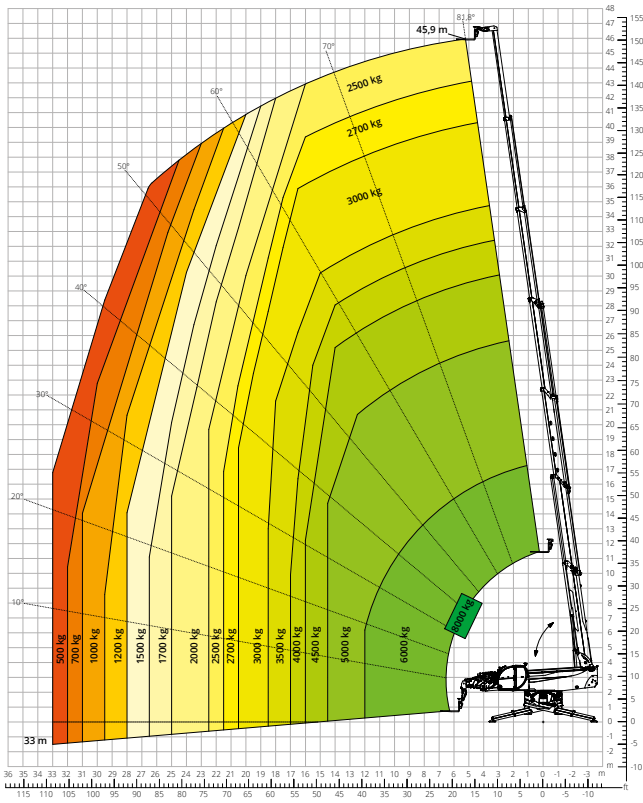
MANUFACTURING



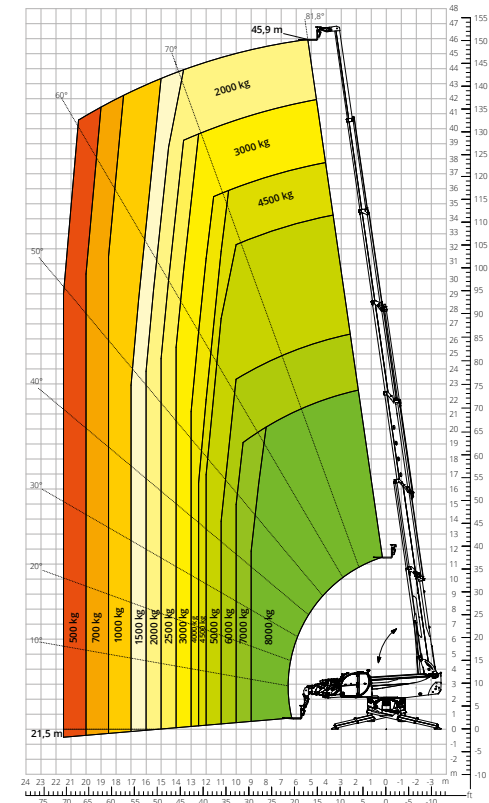
CONSTRUCTION



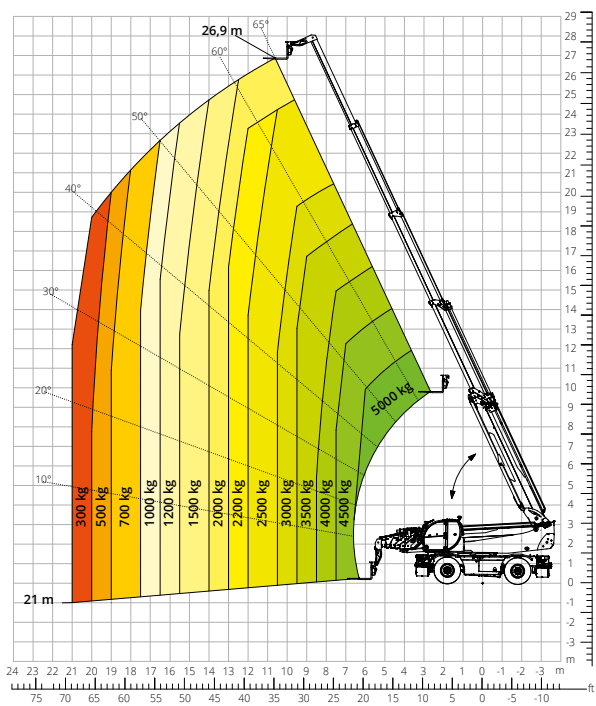
Load chart for
FULLY EXTENDED STABILISERS (360°) - M1



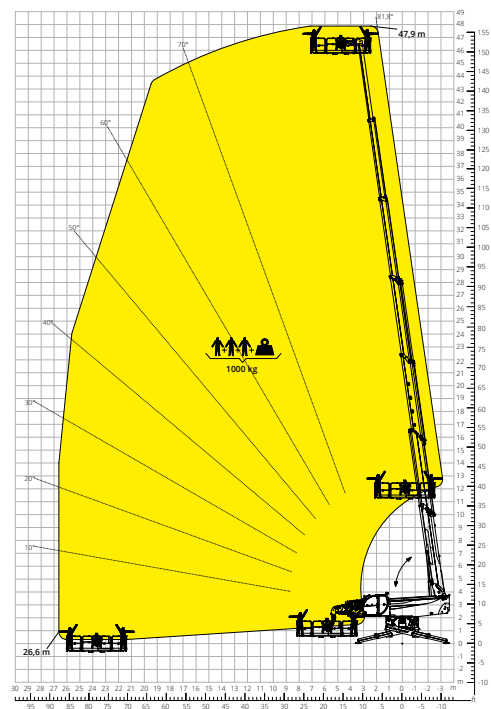
Load chart for
FULLY EXTENDED STABILISERS (360°) - M2



Load chart for
FRONT ATTACHMENT ON TYRES



Load chart for
ROTATING EXTENDABLE PLATFORM 1,000 kg



RTH 8.46

	Rotating telescopic handler	RTH 8.46	
Machine model	Maximum lifting capacity	8,000 kg (centre of gravity 600 mm)	
	Maximum reach	33.00 m	
	Maximum lifting height	45.90 m	
	Rotation	360° (continuous)	
Engine	Type	Volvo TAD 583 VE Stage V	Volvo TAD 552 VE Stage V
	Rated power	175 kW (238 hp) at 2,300 rpm	160 kW (218 hp) at 2,200 rpm
	Maximum torque	975 Nm at 1,380 rpm	910 Nm at 1,450 rpm
	Displacement	5,130 cm ³	
	Cylinders	4 in line	
	Engine type	Turbocharged direct injection diesel	
	Cooling system	Water - intercooler	
Transmission	Type	Hydrostatic	
	Model	Danfoss	
	Maximum pressure	480 bar	
	Displacements	Electronically controlled variable displacement pump Variable displacement motor	
	Gearbox	Dropbox, 2 speeds forward-reverse	
Axles and brakes	Type	Axles with planetary gearboxes	
	Front axle	Oscillating and steering with levelling, +/-8°	
	Rear axle	Oscillating and steering with hydraulic lock	
	Service brake	Hydraulically operated wet multi-disk brakes on each axle	
	Parking brake	Hydraulic with negative action	
	Tyre sizes	17.5 R25	
Performance	Max. travel speed	25 km/h	
	Drawbar pull	151 kN	
	Gradeability	43.6%	
	Turning radius (at forks)	7,850 mm	
Weights	Total unladen	35,300 kg	
	Front axle unladen (boom retracted and lowered)	15,450 kg	
	Rear axle unladen (boom retracted and lowered)	19,850 kg	
Tank and system capacities	Diesel fuel tank	280 l	280 l
	AdBlue	40 l	/
	Hydraulic fluid	300 l	300 l
	Engine oil	16 l	16 l
	Coolant	40 l	40 l
Hydraulic circuit for movements	Circuit type	Load sensing	
	Service pump	Danfoss - SIL 2 electro-proportional valve	
	Max. hydraulic flow rate	210 l/min	
	Max. working pressure	350 bar	
	Distributor for boom and turret movements	Danfoss - SIL 2 electro-proportional valve	
	Movements control	2 two-axis Danfoss joysticks with deadman safety device Managed via CAN bus technology	
Standards met		2006/42/EC: EU Machinery Directive	
		2016/1628: EU Regulation on the emissions of stage V engines	
		EN 1459-X: Relating to standards on the safety requirements for variable reach machines	
		EN 280/EN 280-1/EN 280-2: standards relating to mobile elevating work platforms (if available)	
		ROPS/level 2 FOPS: relating to the standards for protective structures	

