

# FLAT TOP TOWER CRANE

**Specifications:**

- ▶ Max jib length: 279 ft
- ▶ Capacity at max length: 10,300 lb
- ▶ Max capacity: 88,200 lb

**WORKS FOR YOU.™**

# KEY

## Zeichenerklärung · Légende · Leyenda · Legenda · Legenda · Условные обозначения



Hoisting · Heben · Levage · Elevación · Sollevamento · Elevação · Подъем



Trolleying · Katzfahren · Distribution · Distribución · Traslazione carrello · Distribuição · Передвижение каретки



Slewing · Schwenken · Orientation · Orientació · Rotazione · Giro · Поворот



Travelling · Schienenfahren · Translation · Traslación · Traslazione · Móvel · Передвижение



Directive on noise level · Richtlinie für den Schall-Leistungspegel · Directive sur le niveau acoustique · Directiva sobre el nivel acustico · Direttiva sul livello acustico · Directiva sobre nivel de ruidos · Директива по уровню шума



Consult us · Auf Anfrage · Nous consulter · Consultarnos · Consultateci · Consulte-nos · Проконсультироваться с нами



Power requirements · Geforderte Stromstärke · Puissance totale nécessaire · Potencia necesaria · Potenza totale richiesta · Requisitos de energia · Требования по питанию



Power supply · Stromversorgung · Alimentation · Alimentación · Alimentazione · Fonte de alimentação · Питание



In service · In Betrieb · En service · En servicio · In servizio · Em serviço · При работе



Out of service · Außer Betrieb · Hors service · Fuera de servicio · Fuori servizio · Fora de serviço · В режиме простоя



Max. under hook height · Höchste Hakenhöhe · Hauteur maxi. sous crochet · Maxima altura bajo gancho · Altezza max. sottogancio · Alt. máx. sob o gancho · Макс высота крюка



Without load, without ballast, max. jib and max. height · Ohne Last und Ballast, mit Maximalausleger und Maximalhöhe · A vide, sans lest, avec flèche et hauteur maximum · Sin carga, sin lastre, con pluma y altura máxima · A vuoto, senza zavorra, braccio max., altezza max. · Sem carga, sem lastro, lança máxima, altura máxima · Без груза, без балласта, на макс. Длинне вспо-могательной стрелы и макс. Высоте



Counterweight · Gegengewicht · Lest de contre-flèche · Lastre de contra flecha · Zavorra controbraccio · Contrapeso · Противовес

### C25

EN 14439-C25 out of service proof with LC1 & LC3 - wind coming from each side 100 Km/h - For different requirement please contact us · EN 14439 - C25 außer Betrieb mit LC1 & LC3 - Wind von jeder Seite 100 km/h - für abweichende Anforderungen kontaktieren Sie uns bitte · EN14439 - C25 hors service avec LC1 & LC3 - vent 100km/h de chaque côté - Nous contacter pour des caractéristiques différentes · EN 14439 - C25 fuera de servicio con LC1 & LC3 - viento de cada lado 100 km/h - contáctenos si necesita más información · EN 14439 - C25 fuori servizio con LC1 & LC 3 - vento in ogni direzione 100 km/h - contattateci per differenti richieste · EN 14439 - C25 fora de serviço com LC1 e LC3 - vento de cada lado 100 kmh - para pedidos especiais, entre em contato conosco · EN14439 - C25 не совместим с LC1 & LC3 - ветровая нагрузка не более 100км/ч - для уточнения спецификаций обращайтесь, пожалуйста, к нам

# CONTENTS


СТТ 721В-40

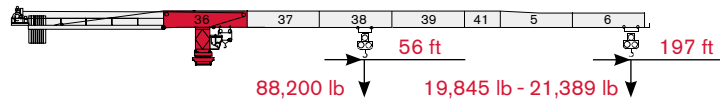
Inhalt · Contenu · Contenido · Indice · Sumário · Содержание

Page · Seite · Page · Página · Pagina · Página · Страница:


Load Diagram · Lastkurven · Courbes de charges · Curvas de cargas · Diagramma di portata · Diagrama de carga · Диаграмма грузоподъёмности .....	4
Tower · Turm · Tour · Torre · Torre · Torre · Башня .....	6
Mechanisms · Antriebe · Mécanismes · Mecanismos · Meccanismi · Mecanismo · Механизм .....	8
Transportation · Transport · Transport · Transporte · Trasporto · Transporte · Транспортировка .....	9

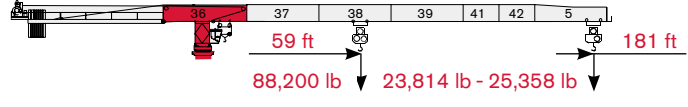



 D2 (11,687lb) A1 (7,872lb)  
 94 AFC 200    5    2




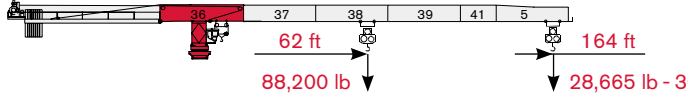
	66 ft	82 ft	98 ft	112 ft	131 ft	148 ft	164 ft	181 ft	197 ft
 44,100 lbs → 108,2 ft lbs	44,100	44,100	44,100	42,575	35,241	30,624	26,930	23,907	21,389
 44,100 lbs → 104,0 ft lbs	44,100	44,100	44,100	40,610	33,422	28,896	25,276	22,314	19,845
 88,200 lbs → 56,0 ft lbs	74,153	57,861	46,999	40,610	33,422	28,896	25,276	22,314	19,845


 D2 (11,687lb) A1 (7,872lb)  
 94 AFC 200    4    2




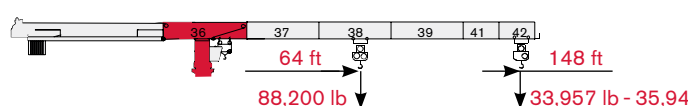
	66 ft	82 ft	98 ft	112 ft	131 ft	148 ft	164 ft	181 ft
 44,100 lbs → 113,4 ft lbs	44,100	44,100	44,100	44,100	37,235	32,396	28,525	25,358
 44,100 lbs → 109,3 ft lbs	44,100	44,100	44,100	43,037	35,485	30,730	26,926	23,814
 88,200 lbs → 58,8 ft lbs	78,279	61,162	49,750	43,037	35,485	30,730	26,926	23,814





 D2 (11,687lb) A1 (7,872lb)  
 94 AFC 200    5    0




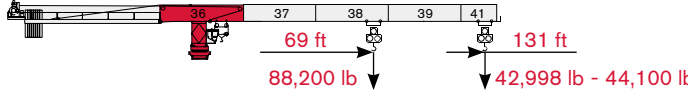
	66 ft	82 ft	98 ft	112 ft	131 ft	148 ft	164 ft
 44,100 lbs → 118,9 ft lbs	44,100	44,100	44,100	44,100	39,340	34,267	30,209
 44,100 lbs → 114,8 ft lbs	44,100	44,100	44,100	44,100	37,659	32,662	28,665
 88,200 lbs → 61,8 ft lbs	82,626	64,639	52,648	45,594	37,659	32,662	28,665


 D2 (11,687lb) A1 (7,872lb)  
 94 AFC 200    4    1




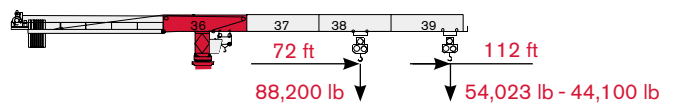
	66 ft	82 ft	98 ft	112 ft	131 ft	148 ft
 44,100 lbs → 123,8 ft lbs	44,100	44,100	44,100	44,100	41,224	35,942
 44,100 lbs → 118,5 ft lbs	44,100	44,100	44,100	44,100	39,115	33,957
 88,200 lbs → 63,8 ft lbs	85,540	66,970	54,590	47,308	39,115	33,957


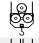


 D2 (11,687lb) A1 (7,872lb)  
 94 AFC 200    3    2



	66 ft	82 ft	98 ft	112 ft	131 ft
 44,100 lbs → 131,2 ft lbs	44,100	44,100	44,100	44,100	44,100
 44,100 lbs → 131,2 ft lbs	44,100	44,100	44,100	44,100	44,100
 88,200 lbs → 69,1 ft lbs	88,200	73,181	59,766	51,875	42,998


 D2 (11,687lb) A1 (7,872lb)  
 94 AFC 200    2    3



	66 ft	82 ft	98 ft	112 ft
 44,100 lbs → 111,6 ft lbs	44,100	44,100	44,100	44,100
 44,100 lbs → 111,6 ft lbs	44,100	44,100	44,100	44,100
 88,200 lbs → 71,6 ft lbs	88,200	76,102	62,200	54,023


# TOWER

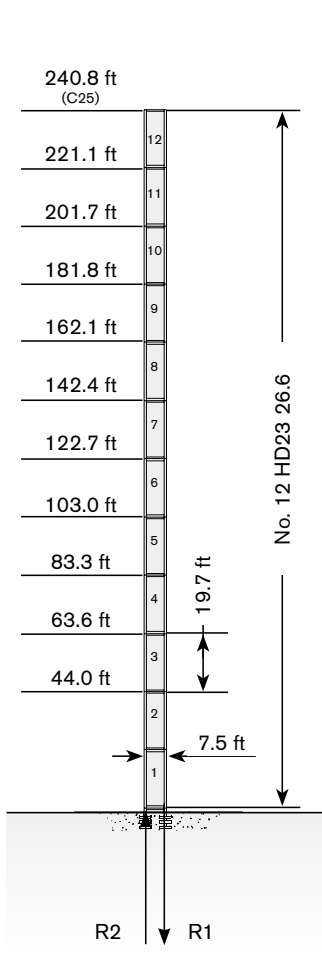
Turn · Tour · Torre · Torre · Torre · Башня

Standard Configurations · Standardkonfiguration · Standard Implantations ·  
 Implantaciones Standard · Installazioni Standard · Configuração padrão ·  
 Стандартная конфигурация крана

## HD23

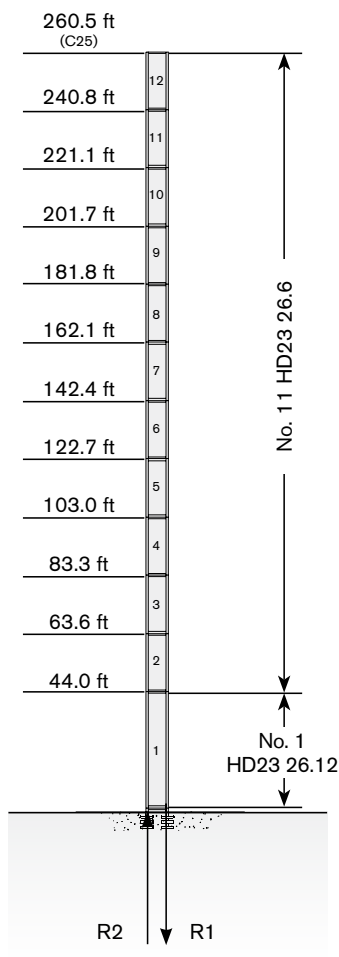
Tower: HD23 & Basement: R2

	●	◊
R1	-3743 kN	-5255 kN
R2	2510 kN	4316 kN
	1540,65 kN	



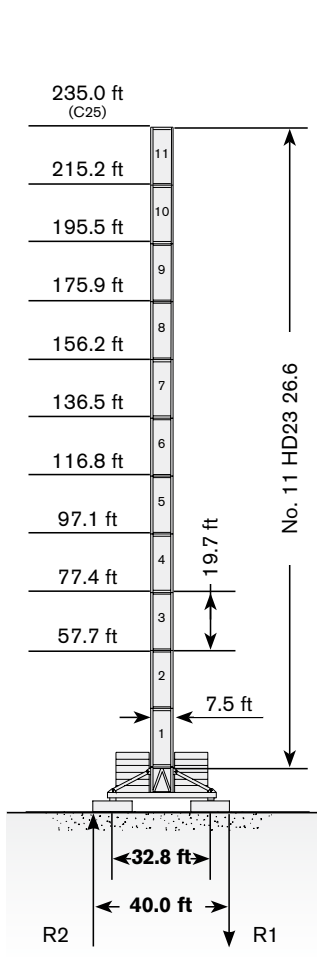
Tower: HD23 & Basement: R3

	●	◊
R1	-5450 kN	-6185 kN
R2	4217 kN	5200 kN
	1627 kN	



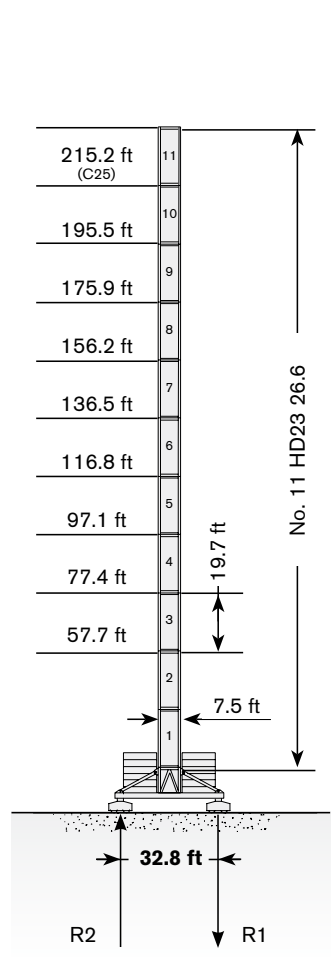
Tower: HD23 & Basement: FP6

	●	◊
R1	-1598 kN	-1823 kN
R2	-344 kN	-120 kN
	1735 kN	



Tower: HD23 & Basement: T6

	●	◊
R1	-1684 kN	-1823 kN
R2	-406 kN	-190 kN
	1735 kN	

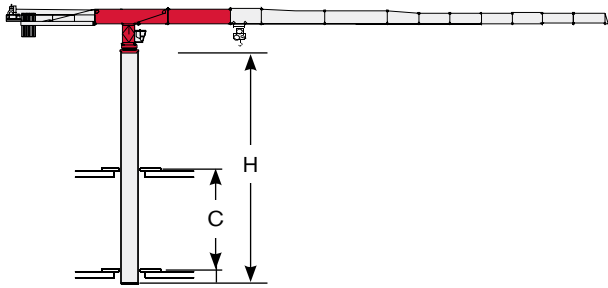


Max. under hook height · Höchstes Hakenhöhe · Hauteur maxi. sous crochet · Maxima altura bajo gancho · Altezza max. sotto gancio · Alt. máx. sob o gancho · Макс высота крюка

Different heights and tower combinations are available; please consult us · Andere Höhen und Turmkombinationen auf Anfrage · Différentes hauteurs et combinaisons de tour sont disponibles; nous consulter · Hay diferentes alturas y combinaciones de torre disponibles. Consúltenos · Altezze diverse e combinazioni di torre sono disponibili; consultateci · Diferentes alturas e combinações de torres disponíveis; fale conosco · Возможны другие сочетания высоты и конфигурации башни; проконсультируйтесь с нами

## Other configurations · Aufstellmöglichkeiten · Autres Implantations · Otras Implantaciones · Altre Installazioni · Outras configurações · Другие конфигурации

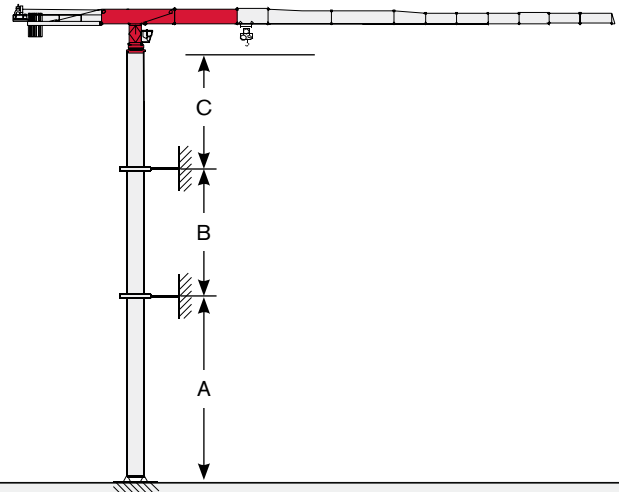
Bottom climbing crane · Kletterkran im Gebäude · Télescopage sur dalles ·  
Telescopage grúa trepadora · Gru climbing · Guindaste automontante interno ·  
· Самоподъемный кран



Tower: HD23-26

C min	H max
46 ft	157 ft
53 ft	177 ft
59 ft	197 ft
69 ft	217 ft

Crane tied to the structure · Geankerter Kran · Grue ancrée ·  
Grúa anclada · Gru ancorata · Guindaste ancorado na estrutura ·  
· Кран, крепящийся к сооружению



Tower: HD23-26

	min	max
A	138 ft	197 ft
B	98 ft	118 ft
C	118 ft	







Different heights and tower combinations are available; please consult us · Andere Höhen und Turmkombinationen auf Anfrage · Différentes hauteurs et combinaisons de tour sont disponibles; nous consulter · Hay diferentes alturas y combinaciones de torre disponibles. Consúltenos · Altezze diverse e combinazioni di torre sono disponibili; consultateci · Diferentes alturas e combinações de torres disponíveis; fale conosco · Возможны другие сочетания высоты и конфигурации башни; проконсультируйтесь с нами

# MECHANISMS





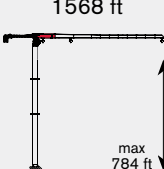

**Antriebe · Mécanismes · Mecanismos · Meccanismi · Mecanismo · Механизм**

**Power supply · Stromversorgung · Alimentation · Suministro eléctrico · Alimentazione · Requisitos de energia · Требования по питанию**

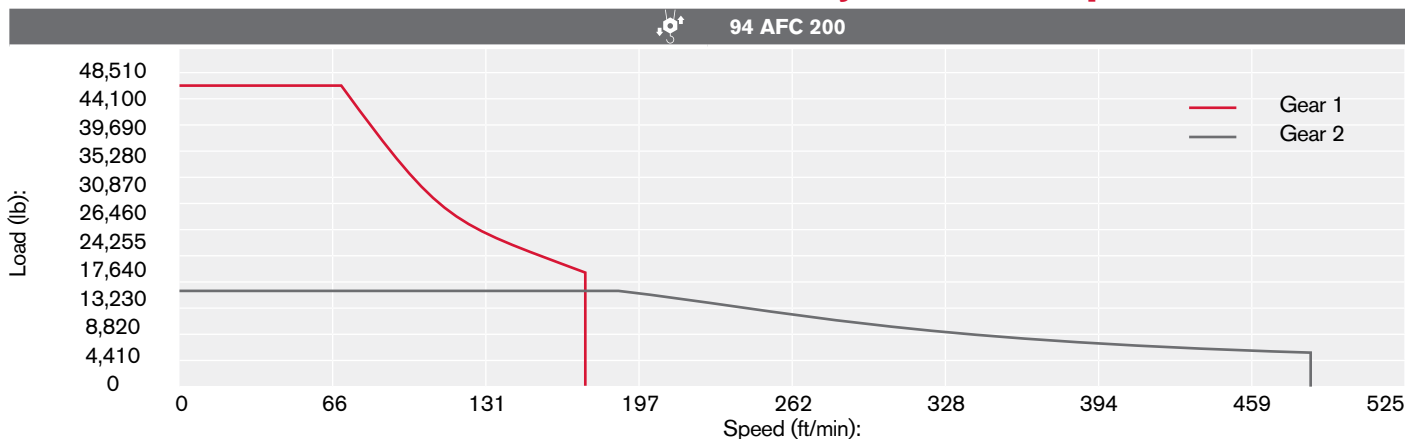
	94 AFC 200 D3	 163 kVA*	 400V - 50Hz / 460V - 60Hz	 2000/14/CE modificata
---	---------------	--	---	---

\* Average consumption · Durchschnittsverbrauch · Consommation moyenne · Consumo medio · Consumo medio · Consumo médio · Среднее потребление



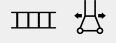
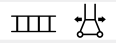
**Hoisting · Heben · Levage · Elevación · Sollevamento · Elevação · Подъем**

		lb	ft/min		kW		
	94 AFC 200 D3		44,100	0 → 69	1°	94	
			16,538	0 → 171			
			14,112	0 → 190	2°		
			4,410	0 → 479			
			88,200	0 → 36	1°		
			33,075	0 → 85			
			28,224	0 → 95	2°		
			8,820	0 → 240			

**Hoisting Speed · Heben Geschwindigkeit · Vitesse de Levage · Velocidad de Elevación · Velocità di Sollevamento · Velocidade de içamento · Скорость подъема**



**Additional Specifications · Weitere Leistungsdaten · Spécifications additionnelles · Otras prestaciones · Altre movimentazioni · Especificações adicionais · Дополнительные спецификации**

	DVF 5 22	0 → 270 ft/min	22 kW
	SCC 2 2 132 P	0,67 r.p.m.	2 x 18 kW
	TSR 4RG 4M8	39 → 79 ft/min (50 Hz) 46 → 92 ft/min (60 Hz)	4 x 80 Nm
	TVF 4RT 4M9	0 → 69 ft/min	4 x 9 kW








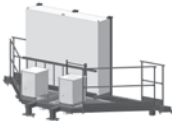

Tower height max.

		T6
	TSR 4RG 4M8	175.9 ft
	TVF 4RT 4M9	>175.9 ft



## Packing list






### Undercarriage

CTT 721B-40	DESCRIPTION · BESCHREIBUNG · DESCRIPTION · DESCRIPCIÓN · DESCRIZIONE · DESCRIÇÃO · ОПИСАНИЕ	LENGTH · LÄNGE · LONGUEUR · LONGITUD · LUNGHEZZA · COMPRIMENTO · ДЛИНА	WIDTH · BREITE · LARGEUR · ANCHURA · LARGHEZZA · LARGURA · ШИРИНА	HEIGHT · HÖHE · HAUTEUR · ALTURA · ALTEZZA · ALTURA · ВЫСОТА	QUANTITY · MENGE · QUANTITÉ · CANTIDAD · CANTITÀ · QUANTIDADE · КОЛИЧЕСТВО	WEIGHT · GEWICHT · POIDS · PESO · PESO · ВЕС
	26.2 x 26.2 ft UNDERCARRIAGE STRUT MOUNTING TOWER SECTION	9' 6"	9' 6"	9' 6"	1	20,176 lb
	26.2 x 26.2 ft UNDERCARRIAGE STRUT	14' 1"	12"	7' 4"	4	4,013 lb
	26.2 x 26.2 ft UNDERCARRIAGE INTERNAL BEAM	13' 1"	6"	1' 1"	4	463 lb
	26.2 x 26.2 ft UNDERCARRIAGE EXTERNAL BEAM	19' 7"	12"	1' 1"	4	1,380 lb
	32.8 x 32.8 ft UNDERCARRIAGE STRUT MOUNTING TOWER SECTION	12"	12"	10' 2"	1	23,042 lb
	32.8 x 32.8 ft LEFT + RIGHT UNDERCARRIAGE STRUT	18' 8"	8' 6"	2' 4"	2 left + 2 right	8,434 lb
	CROSSBEAM FOR TRAVELLING 32.8 x 32.8 ft UNDERCARRIAGE	22' 12"	7' 3"	1' 4"	2	4,476 lb
	32.8 x 32.8 ft UNDERCARRIAGE ELECTRICAL BOX SUPPORT PLATFORM FOR TVF 4RT 4M9 TRAVELLING DRIVE UNIT	18' 8"	7' 3"	7' 10"	1	2,867 lb
	32.8 x 32.8 ft UNDERCARRIAGE ELECTRICAL BOX SUPPORT PLATFORM FOR TSR 4RG 4M8 TRAVELLING DRIVE UNIT	18' 4"	6' 11"	12' 2"	1	1,422 lb



# TRANSPORTATION

Transport · Transport · Transporte · Trasporto · Transporte · Транспортировка

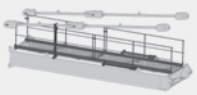
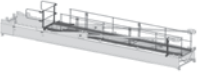

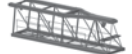

## Tower

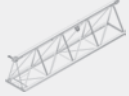
СТТ 721В-40	DESCRIPTION · BESCHREIBUNG · DESCRIPTION · DESCRIPCIÓN · DESCRIZIONE · DESCRIÇÃO · ОПИСАНИЕ	LENGTH · LÄNGE · LONGUEUR · LONGITUD · LUNGHEZZA · COMPIMENTO · ДЛИНА	WIDTH · BREITE · LARGEUR · ANCHURA · LARGHEZZA · LARGURA · ШИРИНА	HEIGHT · HÖHE · HAUTEUR · ALTURA · ALTEZZA · ALTURA · ВЫСОТА	QUANTITY · MENGE · QUANTITÉ · CANTIDAD · QUANTITÀ · QUANTIDADE · КОЛИЧЕСТВО	WEIGHT · GEWICHT · POIDS · PESO · PESO · ВЕС
	TOWER SECTION HD23 26.6	19' 8"	7' 8"	7' 7"	1	13,892 lb*
	TOWER SECTION HD23 26.3	9' 10"	7' 8"	7' 7"	1	8,066 lb
	TOWER SECTION HD23 22.6	19' 8"	7' 6"	7' 6"	1	10,307 lb*
	TOWER SECTION HD23 22.3	9' 10"	7' 6"	7' 6"	1	5,865 lb*
	SLEWING UNIT	8' 3"	9' 9"	8' 10"	1	34,178 lb

## Cab

	CAB SUPPORT PLATFORM	17' 11"	8' 10"	6' 2"	1	4,410 lb
	CAB TOWER SECTION	8' 4"	6' 11"	10' 10"	1	8,929 lb

## Upper Part

	COUNTERJIB "1D"	23' 6"	2' 11"	6' 2"	1	10218 lb**
	COUNTERJIB "3D"	38' 3"	3' 7"	6' 11"	1	13669 lb**
	JIB SECTION-36 19TT19 25.12	39' 4"	8' 4"	6' 2"	1	29,718 lb***
	JIB SECTION-37 20TT19 25.12	33' 9"	8' 5"	6' 2"	1	16204 lb
	JIB SECTION-38 21TT19 23.10	33' 9"	6' 2"	8' 4"	1	11574 lb

CTT 721B-40	DESCRIPTION · BESCHREIBUNG · DESCRIPTION · DESCRIPCIÓN · DESCRIZIONE · DESCRIÇÃO · ОПИСАНИЕ	LENGTH · LÄNGE · LONGUEUR · LONGITUD · LUNGHEZZA · COMPRIMENTO · ДЛИНА	WIDTH · BREITE · LARGEUR · ANCHURA · LARGHEZZA · LARGURA · ШИРИНА	HEIGHT · HÖHE · HAUTEUR · ALTURA · ALTEZZA · ALTURA · ВЫСОТА	QUANTITY · MENGE · QUANTITÉ · CANTIDAD · CANTITÀ · QUANTIDADE · КОЛИЧЕСТВО	WEIGHT · GEWICHT · POIDS · PESO · PESO · ВЕС
	JIB SECTION-39 TT19 23.10	33' 10"	6' 2"	8' 2"	1	9149 lb
	JIB SECTION-41 TT19 23.6	20' 8"	6' 2"	8' 3"	1	4696 lb
	JIB SECTION-42 TT19 23.5	17' 5"	6' 2"	8' 2"	1	4,079 lb
	JIB SECTION-05 TT19 23.10	32' 10"	6' 2"	8' 2"	1	5,954 lb
	JIB SECTION-06 TT19 20.10	33' 9"	6' 2"	7' 2"	1	4,256 lb
	JIB SECTION-07 TT1920.05	17' 4"	6' 2"	7' 2"	1	1,985 lb
	JIB SECTION-08 TT1917.05	17' 3"	6' 2"	6' 1"	1	1,720 lb
	JIB SECTION-09 TT1917.05	17' 2"	6' 2"	6' 1"	1	1,411 lb
	JIB SECTION-10 TT1917.05	17'	6' 2"	6' 1"	1	1,125 lb
	JIB POINT	6' 12"	4' 1"	5' 3"	1	783 lb
	JIB TROLLEY 88,200 lb	8' 6"	7' 7"	5' 3"	1	1,984 lb
	4-PART LINE HOIST BLOCK 88,200 lb	5' 11"	2' 4"	6' 7"	1	2,569 lb ****
	HOIST WINCH 94 AFC 200 D3 (VECTOR 2) (without rope)	14' 12"	8' 4"	8' 3"	1	15,986 lb

\* inclusive of ladders, platforms and assembly equipment

\*\* inclusive of tie-bars and safety rails

\*\*\* inclusive of trolley winch and accessories

\*\*\*\* ballast plates not included









# TEREX CRANES

## Tower Cranes

Via delle Innovazioni, 17  
33074 Fontanafredda (PN)  
Italy

Ph: +39 0434 989111  
Email: [mktg.cranes@terex.com](mailto:mktg.cranes@terex.com)

## Rough Terrain Cranes

Via Cassoletta, 76 - loc. Crespellano  
40053 Valsamoggia (BO)  
Italy

Ph: +39 051 6501011  
Email: [mktg.cranes@terex.com](mailto:mktg.cranes@terex.com)

November 2020. Product specifications and prices are subject to change without notice or obligation. The photographs and/or drawings in this document are for illustrative purposes only. Refer to the appropriate Operator's Manual for instructions on the proper use of this equipment. Failure to follow the corresponding Operator's Manual when using our equipment or to otherwise act responsibly may result in serious injury or death. The only warranty applicable to our equipment is the standard written warranty applicable to the particular product and sale and Terex makes no other warranty, express or implied. Products and services listed may be trademarks, service marks or trade-names of Terex Corporation and/or its subsidiaries in the USA and other countries. All rights are reserved. Terex, the Terex Crown design and Works For You are trademarks of Terex Corporation or its subsidiaries.

Novembre 2020. Specifiche e prezzi dei prodotti sono soggetti a modifica senza preavviso o altro obbligo. Le fotografie e i disegni in questo documento hanno esclusivamente scopo illustrativo. Consulta il Manuale dell'operatore pertinente per trovare istruzioni per l'utilizzo corretto di questo macchinario. La mancata osservanza delle istruzioni contenute nel relativo Manuale dell'operatore durante l'uso del macchinario e altri comportamenti irresponsabili possono provocare gravi lesioni, anche mortali. L'unica garanzia applicabile ai nostri macchinari è la garanzia scritta standard applicabile al particolare prodotto e alla particolare vendita e Terex è esonerata dal fornire qualsiasi altra garanzia, esplicita o implicita. I prodotti e servizi elencati possono essere dei marchi di fabbrica, marchi di servizio o nomi commerciali di Terex Corporation, e/o delle rispettive società affiliate negli Stati Uniti d'America e in molte altre nazioni. Tutti i diritti riservati. Terex, il marchio Terex Crown e Works for You sono marchi di proprietà di Terex Corporation o delle sue società affiliate.

November 2020. Irrtum und Änderungen der Produktspezifikationen vorbehalten. Die in diesem Dokument enthaltenen Fotos und/oder Zeichnungen dienen rein anschaulichen Zwecken. Für den sachgemäßen Gebrauch der Maschinen ist das entsprechende Bedienerhandbuch heranzuziehen. Unsachgemäßer Umgang mit bzw. unsachgemäßer Einsatz unserer Maschinen kann zu schweren gesundheitlichen Schäden bis hin zum Tod führen. Für unsere Produkte wird ausschließlich die entsprechende, schriftlich niedergelegte Standardgarantie gewährt. Terex leistet keinerlei darüber hinausgehende Garantie, weder ausdrücklich noch stillschweigend. Die genannten Produkte und Dienstleistungen sind in den USA und anderen Ländern ggf. Marken, Dienstleistungsmarken oder Handelsnamen der Terex Corporation und/oder ihrer Tochtergesellschaften. Alle Rechte vorbehalten. Terex, das Terex Kronenlogo und Works For You sind Marken in Eigentum der Terex Corporation bzw. ihrer Tochtergesellschaften.

Novembre 2020. Les caractéristiques et prix des produits peuvent faire l'objet de modifications sans notification préalable. Les photographies ou dessins présentés dans ce document servent uniquement à des fins d'illustration. Pour connaître les instructions relatives à l'utilisation correcte de cet équipement, veuillez vous référer au manuel de l'utilisateur correspondant. Le non-respect du manuel d'utilisateur correspondant lors de l'utilisation de notre équipement ou des actes irresponsables risquent de provoquer de graves blessures, voire un décès. La seule garantie applicable à nos équipements est la garantie écrite standard applicable au produit et à la vente spécifiques. Terex ne délivre aucune autre garantie, expresse ou implicite. Les produits et les services mentionnés peuvent être des marques, des marques de service ou des appellations commerciales de Terex Corporation et/ou de ses filiales aux États-Unis et dans d'autres pays. Tous droits réservés. Terex, le design Terex Crown et Works For You sont des marques déposées de Terex Corporation ou de ses filiales.

Noviembre 2020. Las especificaciones y los precios de los productos están sujetos a cambios sin necesidad de previo aviso ni ninguna otra obligación. Las fotografías y/o dibujos de este documento tienen un fin meramente ilustrativo. Consulte el correspondiente manual de instrucciones del operario para obtener más información sobre el uso correcto de esta maquinaria. No respetar el manual del operario al utilizar la maquinaria o actuar de forma irresponsable puede provocar lesiones graves e incluso mortales. La única garantía aplicable a nuestra maquinaria es la garantía escrita estándar de cada producto y venta. Terex no amplía dicha garantía de forma expresa ni implícita. Los productos y servicios mencionados pueden ser marcas comerciales, marcas de servicio o nombres de marca de Terex Corporation o de alguna de sus filiales en Estados Unidos y otros países. Todos los derechos reservados. Terex, el diseño de la corona Terex y Works For You son marcas registradas de Terex Corporation o de sus filiales.

Novembro 2020. Especificações e preços dos produtos sujeitos a alteração sem aviso prévio ou obrigações. As fotografias e/ou desenhos neste documento são apenas para fins ilustrativos. Consulte o respectivo Manual do Operador para instruções sobre o uso correto deste equipamento. Deixar de acompanhar o respectivo Manual do Operador ao usar o nosso equipamento ou, por qualquer outra forma, deixar de agir de maneira responsável pode resultar em lesões corporais graves ou a morte. A única garantia aplicável ao nosso equipamento é a garantia padrão por escrito correspondente ao produto específico vendido. A Terex não dá outras garantias, expressas ou implícitas. Os produtos e serviços listados podem ser marcas comerciais, marcas de serviço ou nomes-fantasia da Terex Corporation e/ou suas subsidiárias nos EUA e em outros países. Todos os direitos reservados. Terex, o desenho da Coroa Terex e a expressão Works For You são marcas comerciais da Terex Corporation ou suas subsidiárias.

Ноябрь 2020 г. года Технические характеристики и цены могут изменяться без предварительного уведомления и без каких-либо обязательств для производителя. Фотографии и (или) чертежи в настоящем документе служат только в качестве иллюстраций. Инструкции по надлежащей эксплуатации данного оборудования см. в соответствующем руководстве для оператора. Невыполнение указаний соответствующих руководств для оператора при эксплуатации оборудования или другие безответственные действия могут повлечь серьезные травмы или смерть. Единственной гарантией, действующей в отношении нашего оборудования, является стандартная форма письменной гарантии на данный тип оборудования и на условия его продажи. Терех не дает никаких других гарантий: ни ясно выраженных, ни подразумеваемых. Перечисленные продукты и услуги могут быть торговыми марками, знаками обслуживания или торговыми наименованиями Terex Corporation и / или ее дочерних компаний в США и других странах. Все права защищены. Терех, изображение короны Терех и Works for You являются торговыми марками, принадлежащими корпорации Терех или ее дочерним компаниям.



[www.terex.com/cranes](http://www.terex.com/cranes)



Brochure Reference: TC-DS-I-E/I/G/F/S/P/R-CTT721B-40-11/20

**WORKS FOR YOU.™**